



PERFECT SCORE TECHNOLOGIES

4012 Bronze Way
Phone (214) 331-0002
Email: info@pstmfg.com

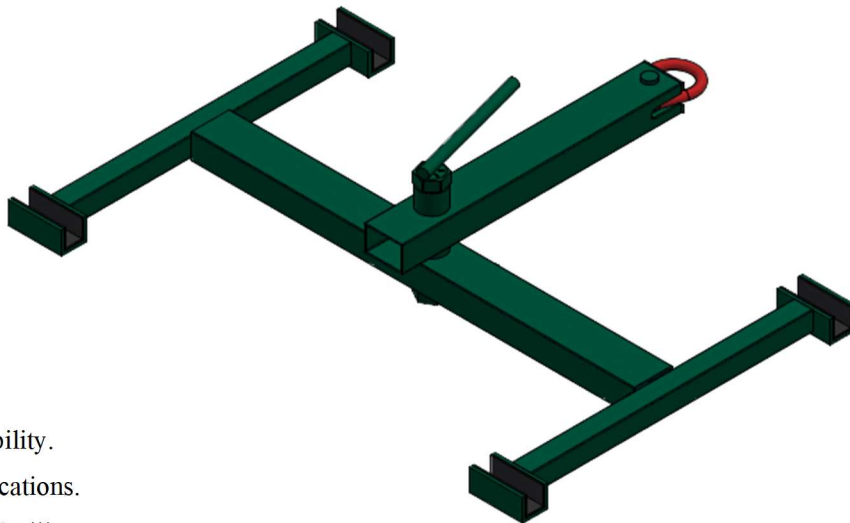
Dallas, Texas 75237
Fax (214) 331-0013
Web: <http://www.pstmfg.com>

Vacuum Cup Frames

Model: VCF

The Steel Rotating Hand Cup Lifting Frames provide an economical solution to enhance your lifting capabilities. They are ideal for efficiently moving glass in warehouses or on job sites where rotation is essential. Designed for use with a crane, hoist, or forklift, this lifting frame ensures safe and effective handling.

4 and 6 Cup Frame Options
Model: VCF-4 / VCF-6



Design Features:

- Made from welded steel for strength and durability.
- Robust yet compact, suitable for various applications.
- Compatible with Woods Power-Grip & PST Gorilla Grip Hand Vacuum Cups.
- Ensures safe and efficient handling of heavy glass.
- Allows 180-degree edgewise rotation with three locking positions for secure load handling.

4 Cup Frame Specifications:

Model: VCF-4 (Rotating Cup Frame)

- Frame Size: 36" x 24" (915 x 610 mm)
- Lifting Capacity: 500 lbs. (227 kg) (4 X 125 LB Cups)
- Type: Rotating Hand Cup
- Minimum Glass Size: 46" x 34" (1168 mm x 863 mm)

6 Cup Frame Specifications:

Model: VCF-6 (Rotating Cup Frame)

- Frame Size: 60" x 24" (1.52 m x 610 mm)
- Lifting Capacity: 700 lbs. (318 kg) (6 X 125 LB Cups)
- Type: Rotating Hand Cup
- Minimum Glass Size: 70" x 38" (1778 mm x 965 mm)

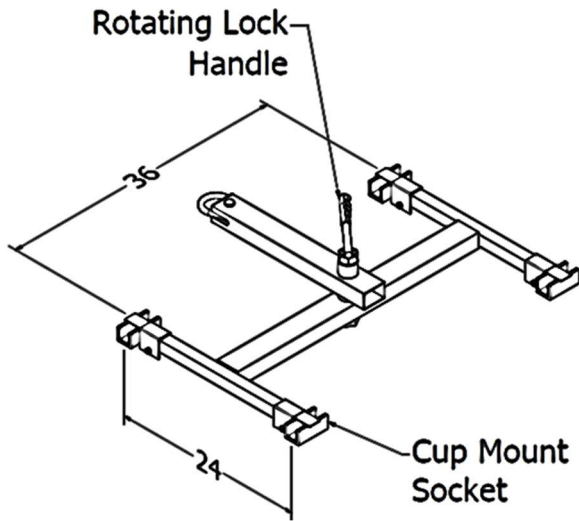
Model	ROTATING VACUUM CUP FRAMES	
	Description	Price
VCF-4	4 Cup Frame - Rotating	950.00
VCF-6	6 Cup Frame - Rotating	1125.00

Model	ROTATING & TILTING VACUUM CUP FRAMES	
	Description	Price
VCF-4T	4 Cup Frame - Rotating & Tilting	1075.00
VCF-6T	6 Cup Frame - Rotating & Tilting	1250.00

Vacuum Cup Frames – Rotating

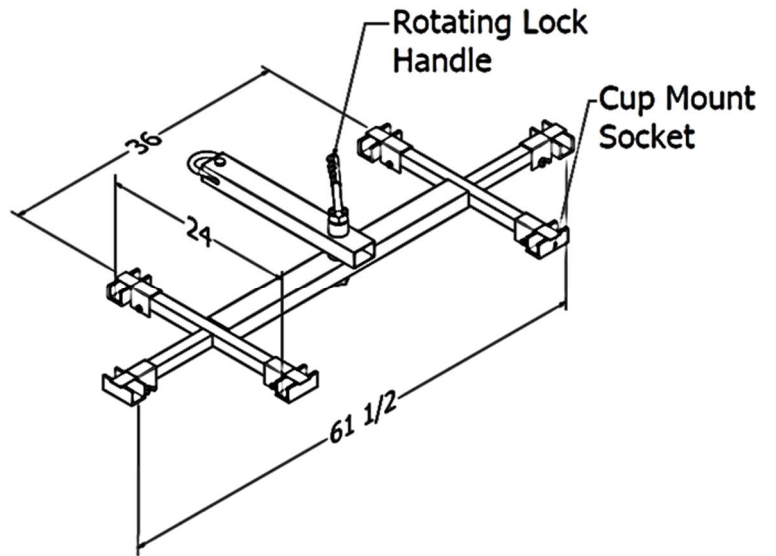
- Do not exceed max lifting capacity
- User should pretest cup performance periodically
- Wear or damage to vacuum cup reduces actual capability

Model: VCF-4

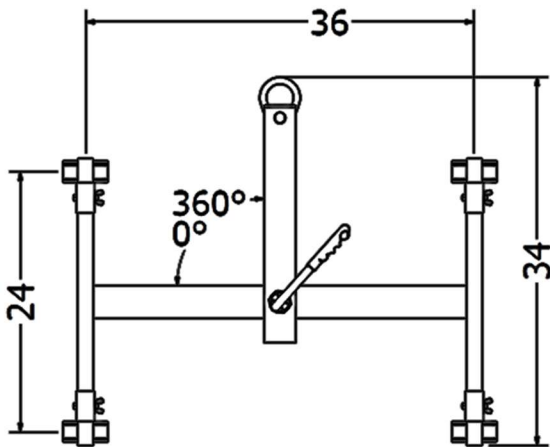


VFC-4 (3D view)

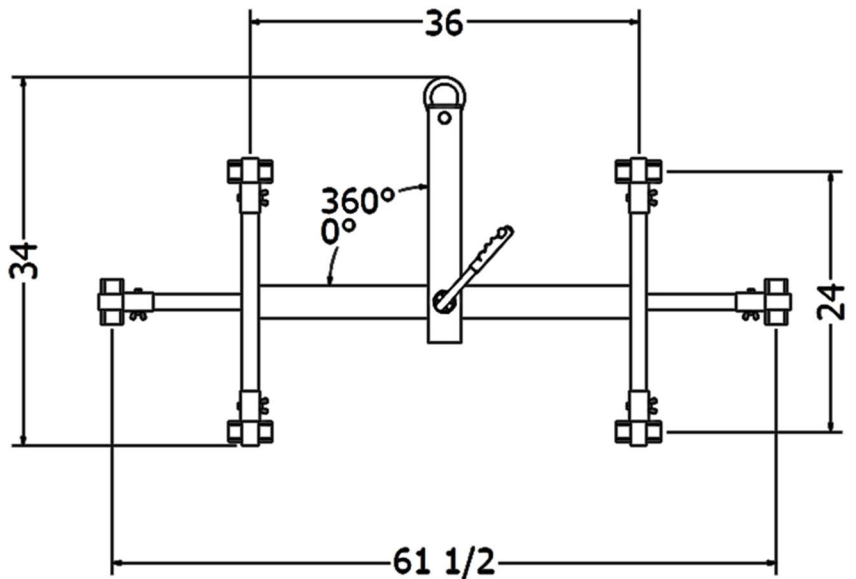
Model: VCF-6



VFC-6 (3D view)



VFC-4 (Top view)

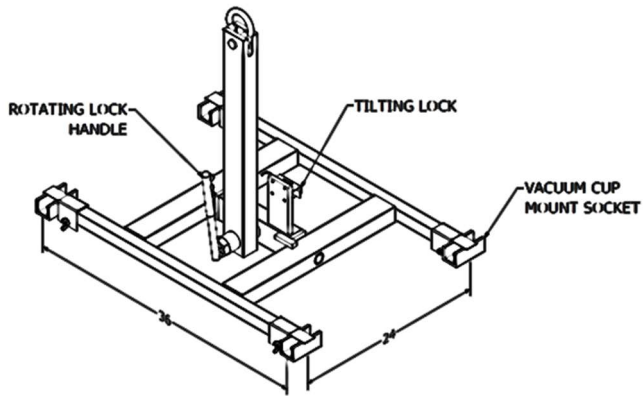


VFC-6 (Top view)

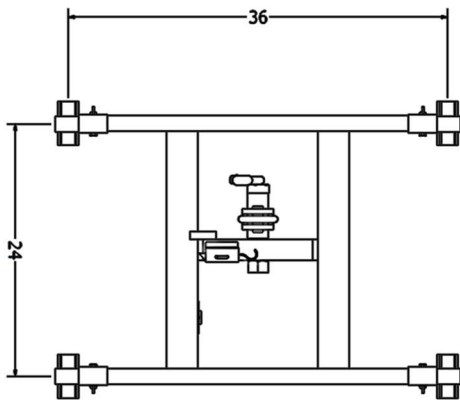
Vacuum Cup Frames - Rotating + Tilting

- Do not exceed max lifting capacity
- User should pretest cup performance periodically
- Wear or damage to vacuum cup reduces actual capability

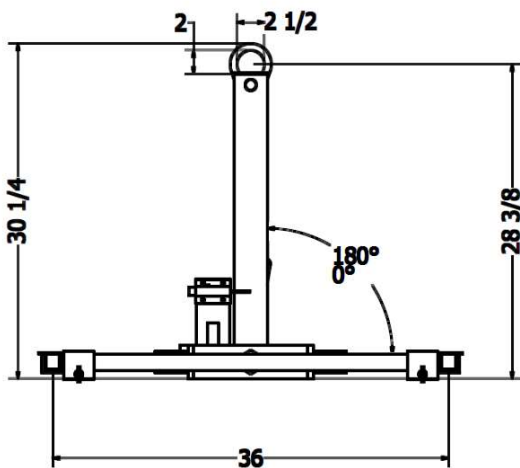
Model: VCF-4T



VFC-4T (3D view)

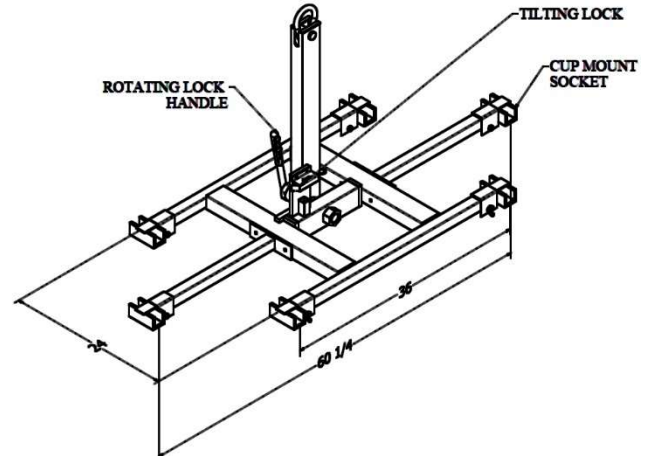


VFC-4T – (Top view)

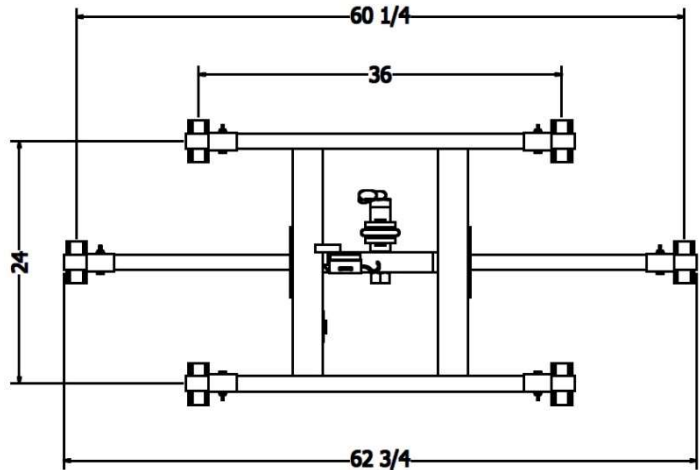


VFC-4T – (Side view tilted in UP position)

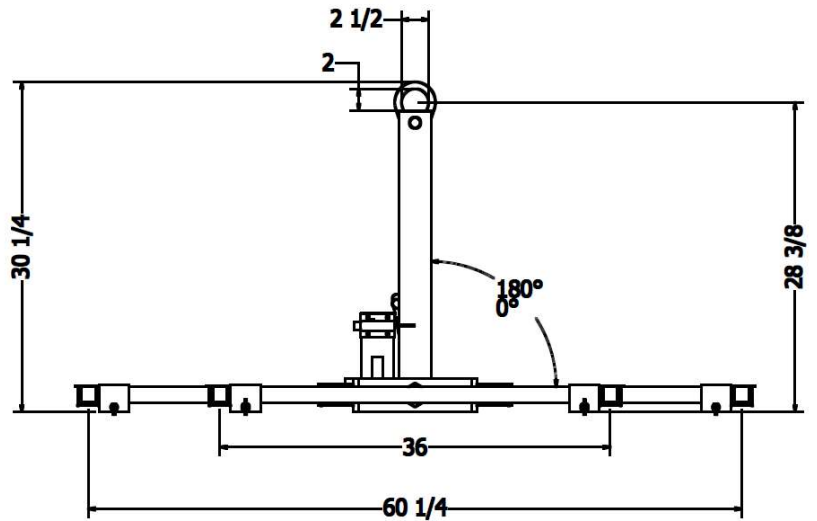
Model: VCF-6T



VFC-6T (3D view)



VFC-6T – (Top view)



VFC-6T – (Side view tilted in UP position)